

POWER BUGGY 1100cc 2-SEATER

- Electric Fuel Injection(EFI)
- Aluminum Alloy Wheels
- Aluminum Gas Tank
- Electric Winch



■ Engine Model / Displacement	4 Cylinder, 4-Stroke / 1100cc
■ Cooling System	Water Cooled
■ Bore	68.5
■ Stroke	78.0
■ Compression Ratio	9.0
■ Max power	51.7 HP / 5200 RPM
■ Max Torque	61 Lb-Ft / 3000 RPM
■ Max Horse Power(HP)	51.7 HP / 5200 RPM
■ Starter System	Electronic Ignition
■ Ignition Type	C.D.I.
■ Lubrication	Wet Sump
■ Engine Oil	-20 :SAE15W-40/SF, -20 :SAESW-30/SF
■ Transmission / Drive Line	5 Speed with Reverse / Independent RWD
■ Overall L X W X H (in)	104.00 X 58.00 X 29.00
■ Wheel Base	89.00
■ Ground Clearance	12.00
■ Seat Height	20.00
■ Rider Capacity	2
■ Dry Weight	1034
■ Gross Weight	1460
■ Brake (F / R)	Disc / Disc
■ Tire Front	25x8-12
■ Tire Rear	25x10-12
■ Fuel Tank Capacity	5.5
■ Suspension Front	Independent Coil Over
■ Suspension Rear	Independent Coil Over
■ AGE Restriction	18
■ Load Capacity	564
■ Battery	12V / 45Ah
■ Climbing Ability	35
■ Package L X W X H (in)	104.00 X 58.00 X 29.00
■ Qty for 40HQ	16

4Cylinder / Liquid Cooled / EFI



- Windshield
- Canopy Equipped
- MP3/MP4 Speaker
- Rear Differential

ALL TYPES OF TIRE AVAILABLE

POWER BUGGY 1100cc 4-SEATER

- Electric Fuel Injection(EFI)
- Aluminum Alloy Wheels
- Aluminum Gas Tank
- Electric Winch



4Cylinder / Liquid Cooled / EFI



■ Engine Model/Displacement	4 Cylinder, 4-Stroke / 1100cc
■ Cooling System	Water Cooled
■ Bore	68.5
■ Stroke	78.0
■ Compression Ratio	9.0
■ Max power	51.7 HP / 5200 RPM
■ Max Torque	61 Lb-Ft / 3000 RPM
■ Max Horse Power(HP)	51.7 HP / 5200 RPM
■ Starter System	Electronic Ignition
■ Ignition Type	C.D.I.
■ Lubrication	Wet Sump
■ Engine Oil	-20 :SAE15W-40/SF, -20 :SAE5W-30/SF
■ Transmission / Drive Line	5 Speed with Reverse / Independent RWD
■ Overall L X W X H (in)	148 X 67 X 59
■ Wheel Base	119.00
■ Ground Clearance	12.00
■ Seat Height	20.00
■ Rider Capacity	4
■ Dry Weight	1256
■ Gross Weight	1432
■ Brake (F / R)	Disc / Disc
■ Tire Front	25x8-12
■ Tire Rear	25x10-12
■ Fuel Tank Capacity	5.5
■ Suspension Front	Independent Coil Over
■ Suspension Rear	Independent Coil Over
■ AGE Restriction	18
■ Load Capacity	882
■ Battery	12V / 45Ah
■ Climbing Ability	35
■ Package L X W X H (in)	148 X 67 X 59
■ Qty for 40HQ	12



DIMENSION(INCH): 148x67x59



- Roof Lights
- Windshield
- MP3/MP4 Speaker
- Rear Differential

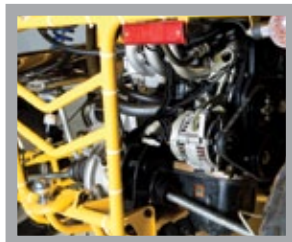
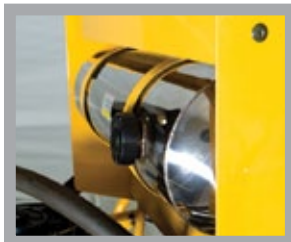
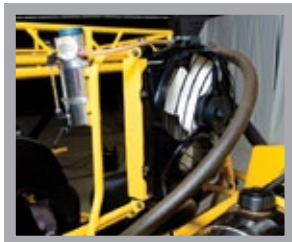
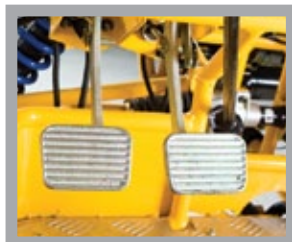
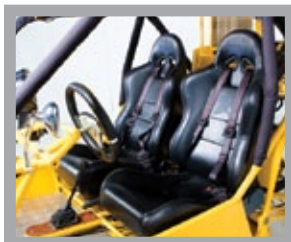
POWER BUGGY 800cc 2-SEATER

- Electric Fuel Injection(EFI)
- Aluminum Alloy Wheels
- Aluminum Gas Tank
- Electric Winch



3Cylinder / 4Stroke / Liquid Cooled

■ Engine Model / Displacement	3 Cylinder, 4-Stroke / 796cc
■ Cooling System	Water Cooled
■ Bore	68.5
■ Stroke	72.0
■ Compression Ratio	9.4
■ Max power	32 HP / 5500 RPM
■ Max Torque	46 Lb-Ft / 4000 RPM
■ Max Horse Power(HP)	32 HP / 5500 RPM
■ Starter System	Electronic Ignition
■ Ignition Type	C.D.I.
■ Lubrication	Wet Sump
■ Engine Oil	-20 :SAE15W-40/SF, -20 :SAE5W-30/SF
■ Transmission / Drive Line	4 Speed with Reverse / RWD
■ Overall L X W X H (in)	104.00 X 57.00 X 33.00
■ Wheel Base	89.00
■ Ground Clearance	12.00
■ Seat Height	20.00
■ Rider Capacity	2
■ Dry Weight	946
■ Gross Weight	1034
■ Brake (F / R)	Disc / Disc
■ Tire Front	25x8-12
■ Tire Rear	25x10-12
■ Fuel Tank Capacity	5.5
■ Suspension Front	Independent Coil Over
■ Suspension Rear	Independent Coil Over
■ AGE Restriction	18
■ Load Capacity	551
■ Battery	12V / 32Ah
■ Climbing Ability	35
■ Package L X W X H (in)	104.00 X 57.00 X 33.00
■ Qty for 40HQ	16



- Windshield
- Canopy Equipped
- MP3/MP4 Speaker
- Rear Differential

796 cc
Three cylinder, 4-stroke, liquid cooling
Shaft drive, two rear wheel
29.5kw (5500±50rpm)
62N.m (4000 4500rpm)
25x8-12
25x10-12

3410x1710x1450(mm)
1500/1440(mm)
2250mm
5.5m
205mm
175kg
480kg

655kg
100km/h
12V/17Ah
55°
26L
Unleaded petrol above 90#



POWER BUGGY 800cc 4-SEATER

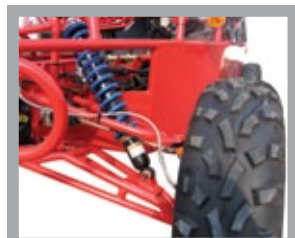
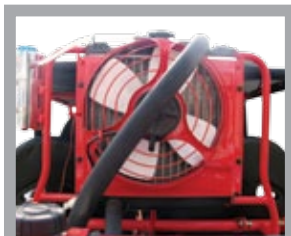
- Electric Fuel Injection(EFI)
- Aluminum Alloy Wheels
- Aluminum Gas Tank
- Electric Winch



3Cylinder / 4Stroke / Liquid Cooled



Engine Model/Displacement	3 Cylinder, 4-Stroke / 796cc
Cooling System	Water Cooled
Bore	68.5
Stroke	72.0
Compression Ratio	9.4
Max power	32 HP / 5500 RPM
Max Torque	46 Lb-Ft / 4000 RPM
Max Horse Power(HP)	32 HP / 5500 RPM
Starter System	Electronic Ignition
Ignition Type	C.D.I.
Lubrication	Wet Sump
Engine Oil	-20 :SAE15W-40/SF, -20 :SAESW-30/SF
Transmission / Drive Line	4 Speed with Reverse / Independent RWD
Overall L X W X H (in)	146.00 X 57.00 X 33.00
Wheel Base	121.00
Ground Clearance	12.00
Seat Height	20.00
Rider Capacity	4
Dry Weight	1256
Gross Weight	1432
Brake (F / R)	Disc / Disc
Tire Front	25x8-12
Tire Rear	25x10-12
Fuel Tank Capacity	5.5
Suspension Front	Independent Coil Over
Suspension Rear	Independent Coil Over
AGE Restriction	18
Load Capacity	882
Battery	12V / 32Ah
Climbing Ability	35
Package L X W X H (in)	146.00 X 57.00 X 33.00
Qty for 40HQ	12



- Windshield
- Canopy Equipped
- MP3/MP4 Speaker
- Rear Differential

796 cc
Three cylinder, 4-stroke, liquid cooling
Shaft drive, two rear wheel
29.5kw (5500±50rpm)
62N.m (4000-4500rpm)
25x8-12
25x10-12

3410x1710x1450(mm)
1500/1440(mm)
2250mm
5.5m
205mm
175kg
480kg

655kg
100km/h
12V/17Ah
55°
26L
Unleaded petrol above 90#

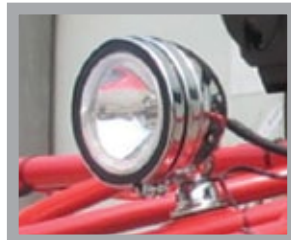
POWER BUGGY 250cc

- Aluminum Alloy Wheels
- Shaft Drive with Rear Differential
- Fully Automatic
- Water Cooled



■ Engine Model / Displacement	Single Cylinder, 4-Stroke / 244cc
■ Cooling System	Water Cooled
■ Bore	72.0
■ Stroke	60.0
■ Compression Ratio	10.0
■ Max power	16.8 HP / 7000 RPM
■ Max Torque	13 Lb-Ft / 5500 RPM
■ Max Horse Power (HP)	16.8 HP / 7000 RPM
■ Starter System	Electronic Ignition
■ Ignition Type	C.D.I.
■ Lubrication	Wet Sump
■ Engine Oil	SAE15W/40SF
■ Transmission / Drive Line	Fully Automatic with Reverse / Independent RWD
■ Overall L X W X H (in)	100.00 X 58.00 X 29.00
■ Wheel Base	78.00
■ Ground Clearance	11.00
■ Seat Height	19.00
■ Rider Capacity	2
■ Dry Weight	814
■ Gross Weight	924
■ Brake (F / R)	Disc / Disc
■ Tire Front	25x8-12
■ Tire Rear	25x10-12
■ Fuel Tank Capacity	3.0
■ Suspension Front	Independent Coil Over
■ Suspension Rear	Independent Coil Over
■ AGE Restriction	18
■ Load Capacity	551
■ Battery	12V / 12Ah
■ Climbing Ability	35
■ Package L X W X H (in)	100.00 X 58.00 X 29.00
■ Qty for 40HQ	24

Windshield / Canopy



- MP3/MP4 Speaker
- Rear Differential

796 cc
Three cylinder, 4-stroke, liquid cooling
Shaft drive, two rear wheel
29.5kw (5500±50rpm)
62N.m (4000 4500rpm)
25x8-12
25x10-12

3410x1710x1450(mm)
1500/1440(mm)
2250mm
5.5m
205mm
175kg
480kg

655kg
100km/h
12V/17Ah
55°
26L
Unleaded petrol above 90#